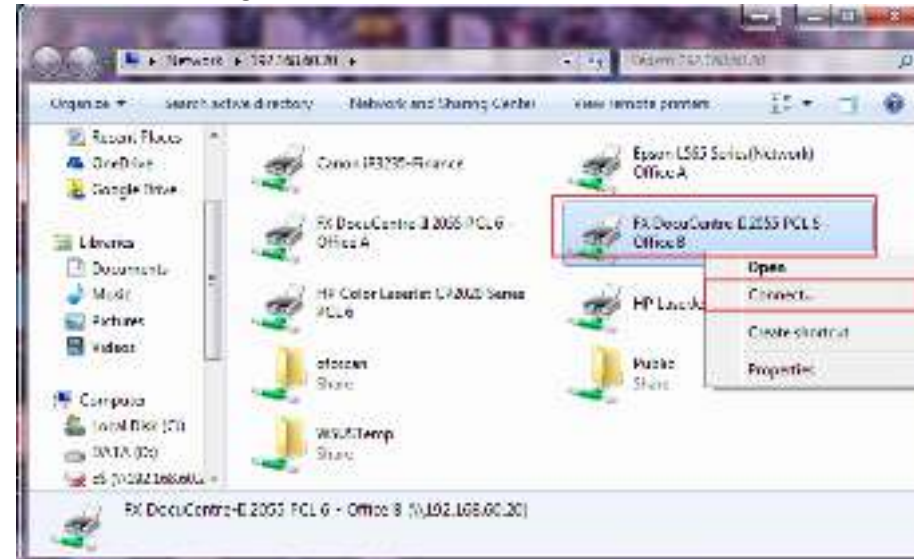


Add Printer (Windows 7)

* Start - type [\\192.168.60.20\](http://192.168.60.20/)



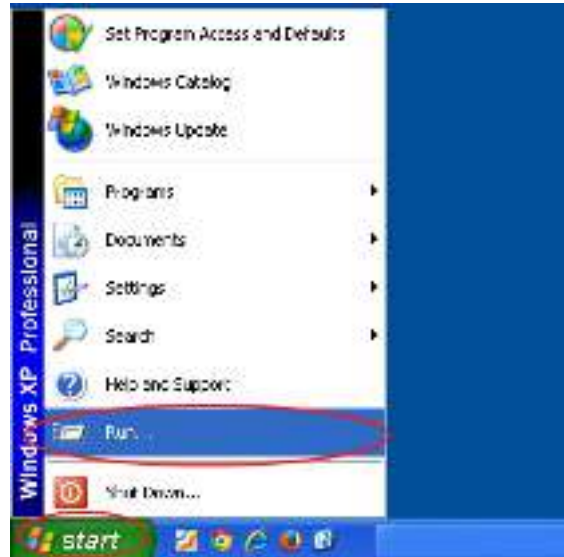
* select **Printer** – right click, select **Connect...**



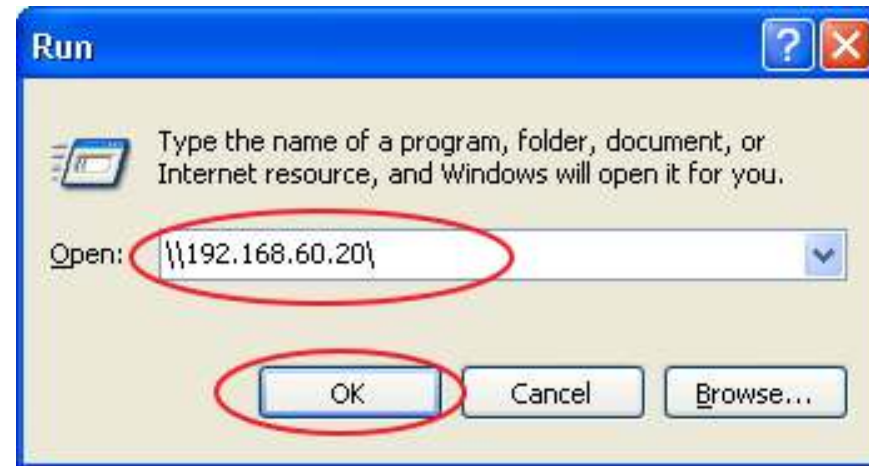
* Done

Add Printer (Windows XP)

* Start – Run



* Type [\\192.168.60.20\](http://192.168.60.20) - click OK



* Select **Printer** – Right Click, select **Connect**



* Done